

Breeze - Workflow limits guide

This guide will show how to use limits to visualize the result

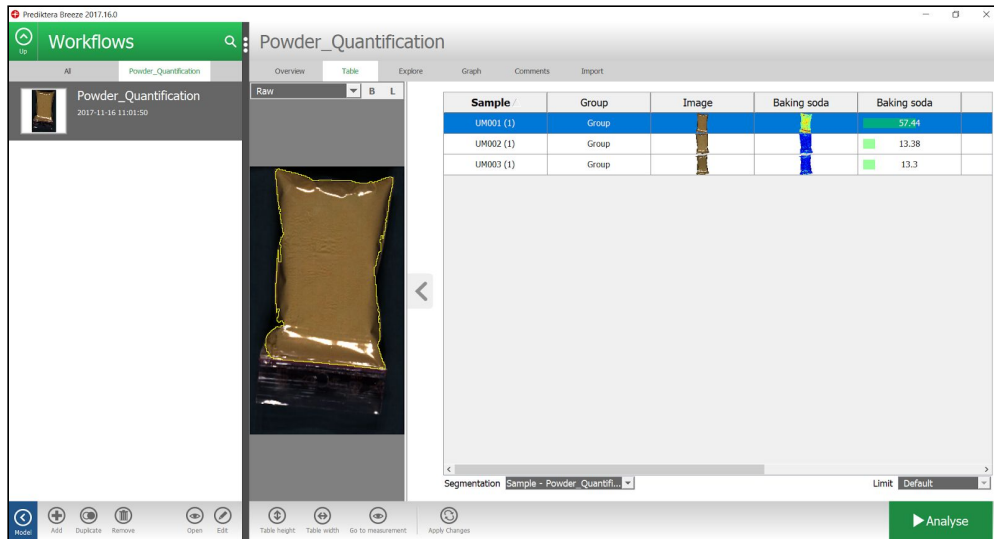
Note. Limit will only change the visualisations and will not affect the prediction result

Note. It's recommended to first go through ["Powder Quantification Tutorial"](#)

Limit example with Powder Quantification image data

This section starts after creating a new Workflow with Record data using the Group “Unknown Mix” from Powder Quantification.

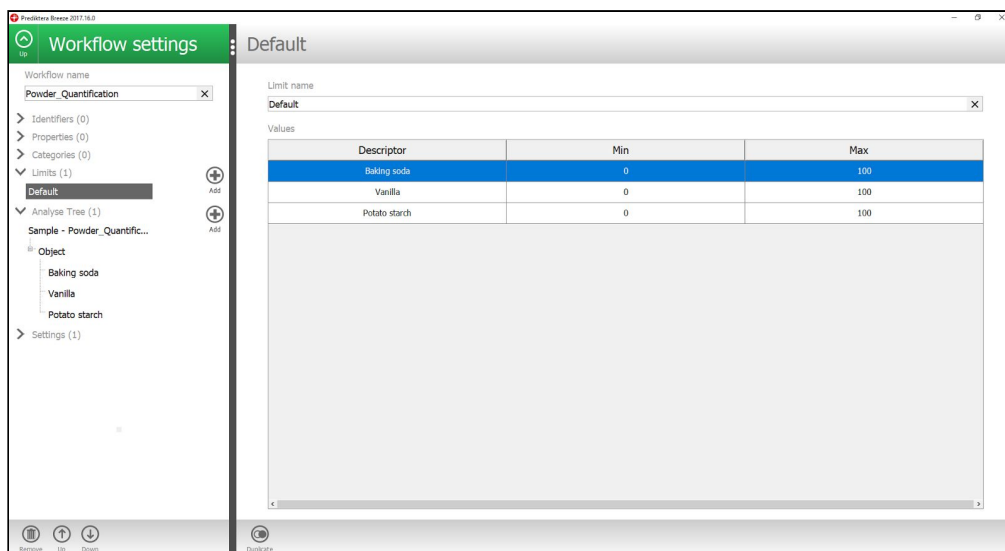
1. You should have the following view:



2. Press the Edit button



3. The default limits looks like this:



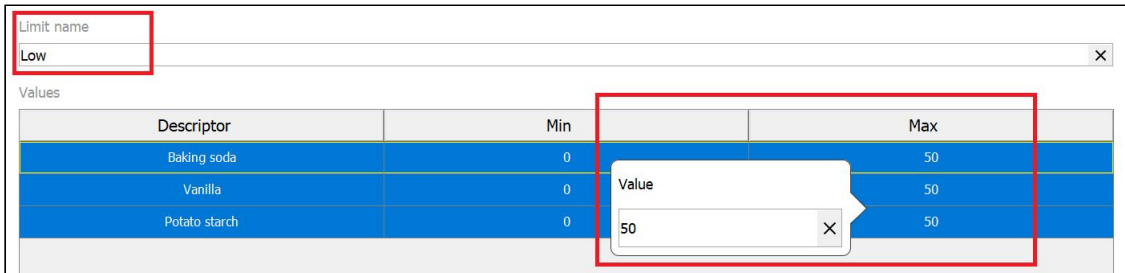
- Duplicate the default limit



- Change the “Limit name” to “Low”

Select all three rows and right click on the Max column

Enter value 50 for Max column and press Enter key

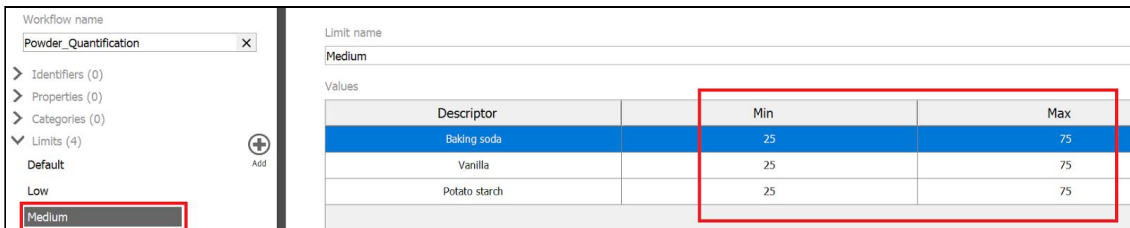


Descriptor	Min	Max
Baking soda	0	50
Vanilla	0	50
Potato starch	0	50

- Duplicate the limit
- Change the “Limit name” to “Medium”

Enter value 25 for “Min” column

Enter value 75 for “Max column



Descriptor	Min	Max
Baking soda	25	75
Vanilla	25	75
Potato starch	25	75

- Duplicate the limit
- Change the “Limit name” to “High”

Enter value 50 for “Min” column

Enter value 100 for “Max” column

Workflow name
Powder_Quantification

- > Identifiers (0)
- > Properties (0)
- > Categories (0)
- > Limits (4)
 - Default
 - Low
 - Medium
 - High

Limit name
High

Values

Descriptor	Min	Max
Baking soda	50	100
Vanilla	50	100
Potato starch	50	100

10. Press Up button



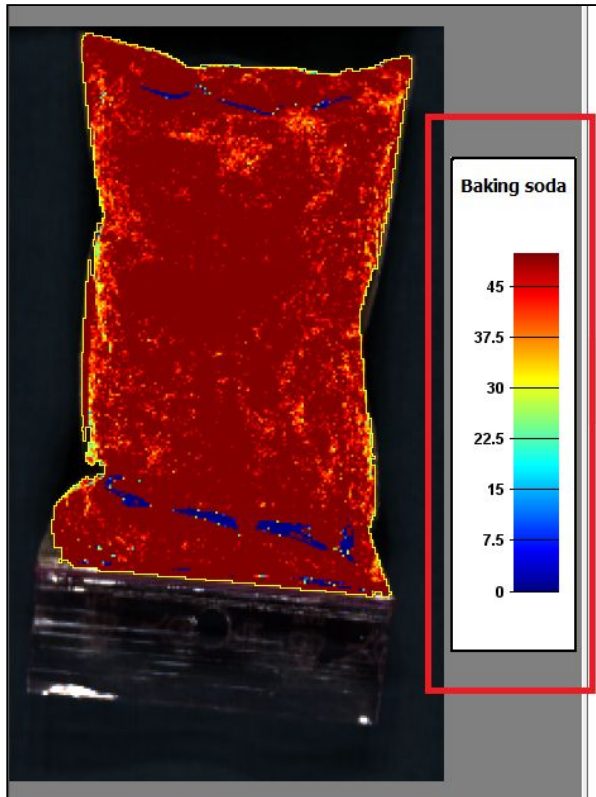
11. Expand the view by pressing the three dots

Add legend by pressing the “L” button the measurement preview

Then change the “Limit” from “Default” to “Low”

Sample /	Group	Image	Baking soda	Baking soda	Vanilla	Vanilla	Potato starch	Potato starch
UM001 (1)	Group			57.42		3.264		39.22
UM002 (1)	Group			13.46		35.66		50.58
UM003 (1)	Group			13.34		2.195		84.35

Note that the limit also changed the “Min” and “Max” value for the legend



12. You can now try to change the limit to “Medium” and “High” and see the different visualization results.