

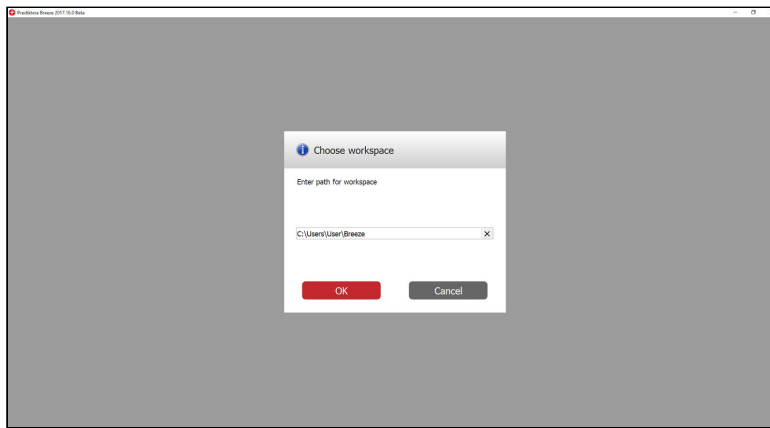
Breeze - Workspace guide

This guide will give some information about the Breeze workspace

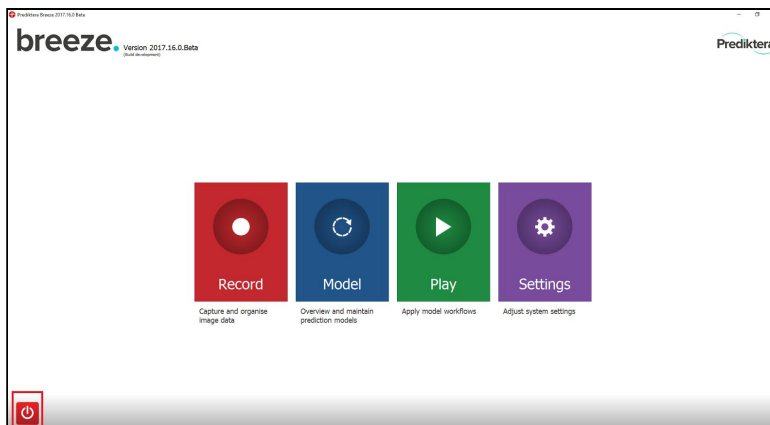
Choose and switch workspace

You can have one or several workspaces in Breeze, but you can only work with one at the time. When you start Breeze for the first time you will have to choose the default workspace folder.

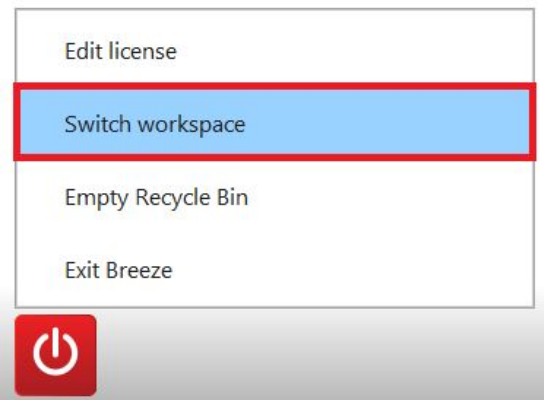
Enter workspace folder in the “Choose workspace” dialog and **press OK**.



Press the “Shutdown” button in the bottom left corner to **change workspace**.



Press “Switch workspace” to show the “Choose workspace” dialog.



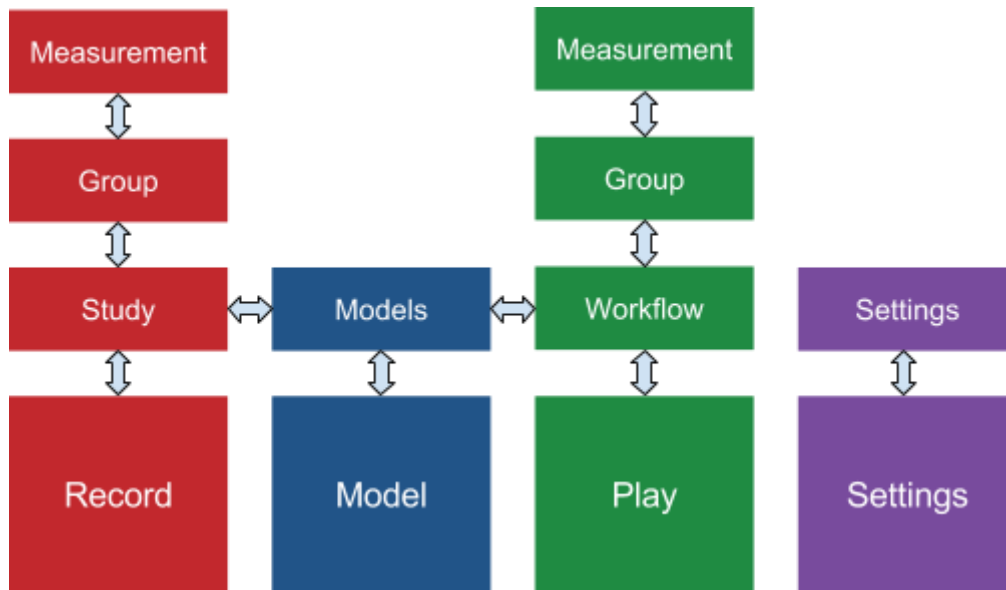
Note. After switch to a new workspace Breeze must close down and be restarted manually

Workspace in the file system

The name for a Study, Model or Workflow entry are same will be the same name as the folder in the file system. You can change name in Breeze to update the name in the file system. If you close down Breeze you can also change the name in the file system and when you restart Breeze the name would have changed.

- ❑ Workspace
 - ❑ Record
 - ❑ Study
 - ❑ Group
 - ❑ Measurement
 - ❑ Model
 - ❑ Model
 - ❑ Play
 - ❑ Workflow
 - ❑ Group
 - ❑ Measurement
 - ❑ Data
 - ❑ Download *(For example tutorials are stored here)*
 - ❑ Import *(Default folder for reference data import files)*
 - ❑ Recycled *(Deleted data will be moved here)*

Graphical user interface overview



Recycle Bin

When you delete a Study, Group or Measurement it will be moved into the Recycled folder. It is possible to manually move back the deleted entry, in the file browser, if it was deleted by mistake.

To clear the Recycled folder you can **click on the “Shutdown”** button and **choose “Empty Recycle Bin”**

